



Repair Movies, Mechanical

Applicable for K610i, K610c, K610m, K618i and K618c

CONTENTS

1	Read this first!	2
2	Movies	3
2.1	Disassembly	4
2.1.1	Disassembly	4
2.2	Replacements	5
2.2.1	Plate (LCD)	5
2.2.2	TFT LCD Module 176 x 220	5
2.2.3	Key Flex Module	5
2.2.4	Frame (PWB)	5
2.2.5	Main Antenna	6
2.2.6	Camera Shield	6
2.2.7	Camera, 2M Pixel.....	6
2.3	Reassembly	7
2.3.1	Reassembly	7
3	Revision history	8

1 Read this first!

After downloading and extracting the Repair Movies zip file, you will get access to this PDF document, the FEA document 'Repair Movies, Mechanical'.

To watch the repair movies, Flash Player version 6 or later must be installed on your computer. The Flash Player can be downloaded free of charge from www.adobe.com.

By clicking on the pictures with blue borders in the Movies section, the repair movies will be shown in an Internet Explorer window.

However, when running the movies on a Windows XP computer with Service Pack 2 installed, the movies become blocked each time you try to access them and will not be launched until you have accepted to unblock the content and then again confirmed the action.

To avoid this, you can adjust your computer's security settings in the following way:

- open Internet Explorer
- click Tools / Internet Options / Advanced, and scroll down until you find Security
- check the box with the text 'Allow active content to run in files on My Computer'

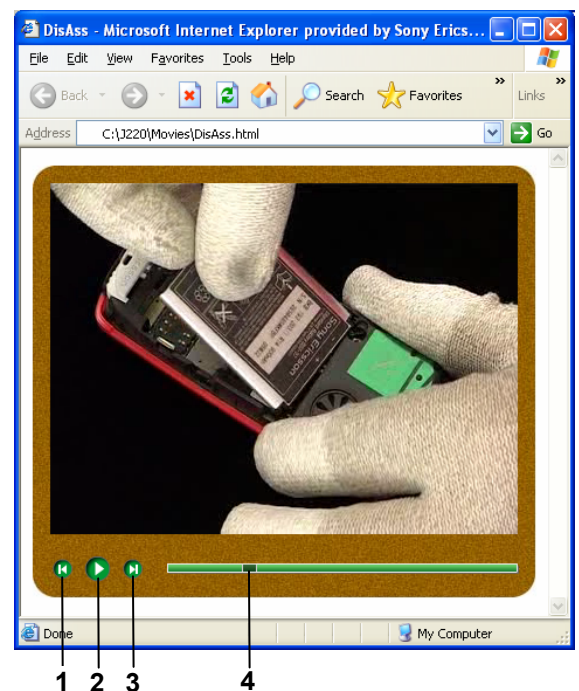
NOTE!

Do not change this setting unless you are aware of how this will affect the security of your computer!

After having the first movie window opened, you should adjust the size of the Internet Explorer window until it looks like the adjacent picture example.

Furthermore, the movie can be controlled with the help of three buttons and a slider handle, as follows:

1. Go to the beginning of the movie
2. When running - 'Freeze' the picture
When 'frozen' - Start running from current position
3. Go to the end of the movie
4. Slide the handle to any wanted part of the movie
or use it as a slow motion 'scrubber'



NOTE!

These Repair Movies are to be regarded as a supplement to and not a substitute for the Working Instruction.

When watching these movies you should have the Working Instruction available as well, since the Working Instruction is a document with lots of information not being included in the Repair Movies.

2 Movies

The movies are divided into the same three categories as in the Working Instruction:

- Disassembly
- Replacements
- Reassembly

Most of the Replacements instructions are quite easy to carry out, so just a few of them are available as movies.

All Disassembly and Reassembly instructions are covered by the movies, where each movie includes several separate instructions of the Working Instruction, as listed below the movie headings.

2.1 Disassembly

2.1.1 Disassembly

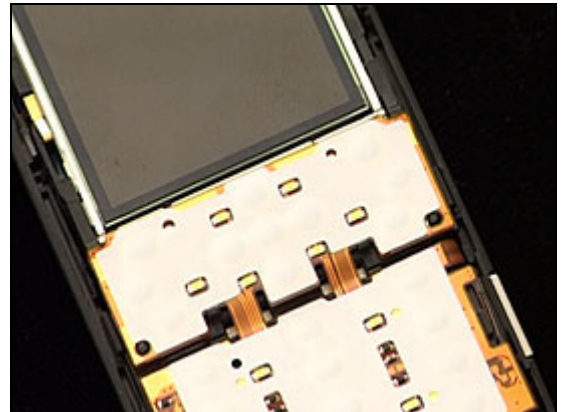
including:

- Sub Assembly Lid (Battery) & Battery
- Cover (Rear)
- Sub Assembly Case (Front)
- Key (Main)
- Sub Assembly Case (Rear)



2.2 Replacements

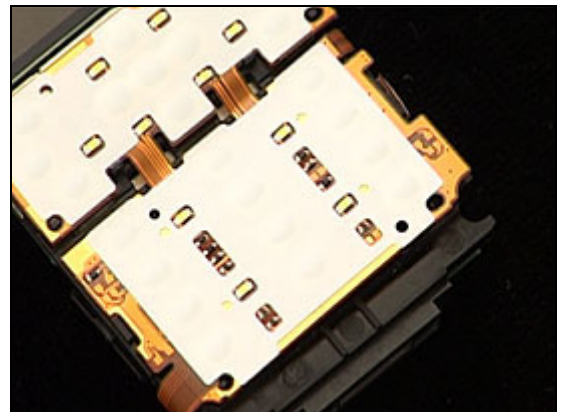
2.2.1 Plate (LCD)



2.2.2 TFT LCD Module 176 x 220



2.2.3 Key Flex Module

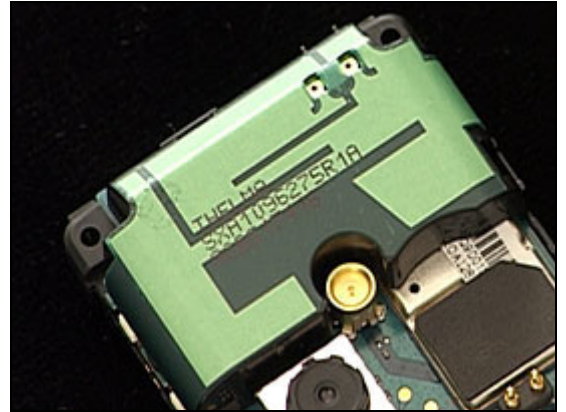


2.2.4 Frame (PWB)

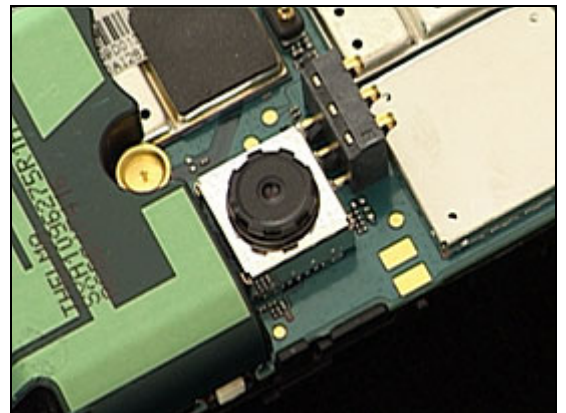


Replacements *continued*

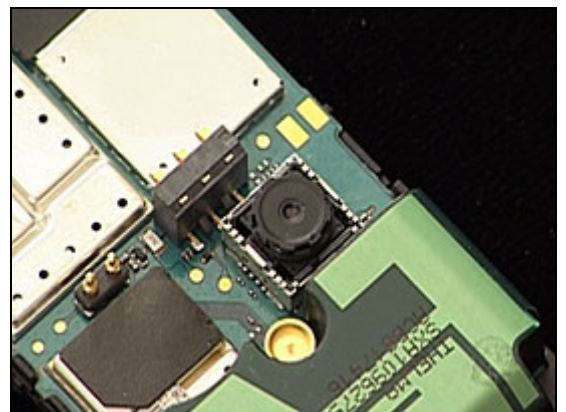
2.2.5 Main Antenna



2.2.6 Camera Shield



2.2.7 Camera, 2M Pixel



2.3 Reassembly

2.3.1 Reassembly

including:

- Sub Assembly Case (Rear)
- Key (Main)
- Sub Assembly Case (Front)
- Cover (Rear)
- Battery & Sub Assembly Lid (Battery)





3 Revision history

Rev.	Date	Changes / Comments
A	2006-06-13	Initial release